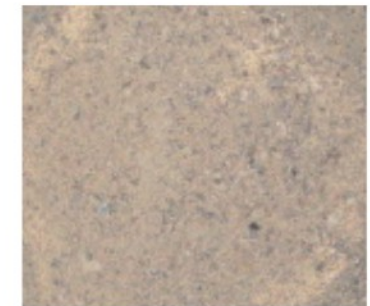




RAJ CERAMICS

BASIC MONOLITHICS

Sl. No.	Brand	MgO % min	SiO ₂ % max	CaO % max	Cr ₂ O ₃ % min	Type of Setting	Sintering Approx. Temp °C	Grading Range (mm)	Application Temp °C
1	RC M 84	83	8.5	-	-	Chemical	1400	0-4	1700
2	RC 1/3	84	8	-	1.5	Chemical	1350	0-4	1750
3	RC M 95	94	2.5	1	1.5	Ceramic	1500	0-5	1750
4	RC M 90	90	4	2	1.5	Chemical/ceramic	1450	0-5	1700
5	RC GUN	82	7	1.7	1.5	Chemical/ceramic	1300	0-3	1750
6	RC Supergun	88	3.5	1.4	1.5	Chemical/Ceramic	1250	0-3	1800
7	RC Hearth Mass	85	5	6	-	Chemical/Ceramic	1200	0-8	1750
8	RC Tapensol	82	6.5	1.5	-	Chemical/ceramic	1100	0-10	1750
9	RC - IF Mass	85	-	-	-	Ceramic	1350	0-6	1750
10	RC - MM	85	-	-	-	Ceramic	1400	0-0.5	1700
11	RC - Fettling	33	5	60	-	Ceramic	1150	0-5	1680



1. The above values represent values obtained on standard squares in accordance with accepted test methods and are subject to manufacturing variations. This information is supplied as a technical service and may change without notice. Results are only indicative data and should not be used for specification/guarantee purposes. Size tolerance $\pm 1.5\%$ or $\pm 2\text{mm}$ whichever ever is greater.
2. We also make Bricks on tailor-made specification
3. Grading means 90% passing through the desired sieve

